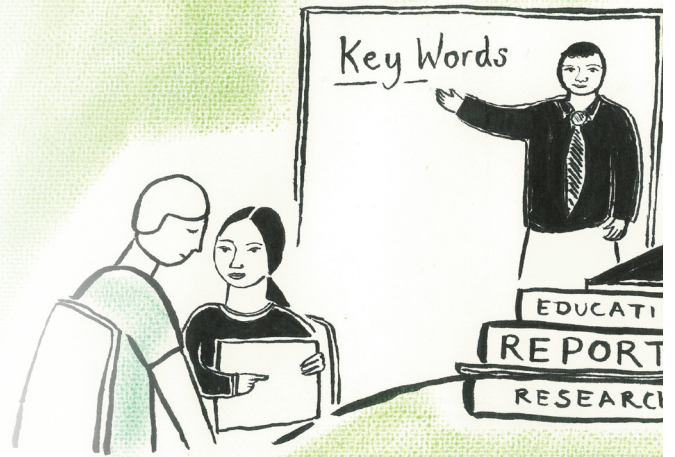


EAL Assessment: Working with The Bell Foundation's EAL Assessment Framework for Schools



This practical course for primary and secondary practitioners aims to support schools to embed effective practices for assessing English language proficiency that will lead to more targeted in-class support and improved EAL learner outcomes. It will introduce guidance, strategies and resources to enhance the ways schools and teachers draw on assessment information on English language proficiency to improve teaching and learning, and to ensure that all learners with EAL are able to fully access the curriculum. This course introduces practitioners to The Bell Foundation's EAL Assessment Framework for Schools and provides advice on how it can be used to monitor progress and set relevant teaching and learning targets.

This course covers:

- Why EAL assessment is important, and what constitutes effective EAL assessment
- How to use the EAL Assessment Framework for Schools (ELTons 2018, Innovation Awards finalist) to arrive at a best fit judgement of language proficiency, monitor on-going progress and set appropriate language learning targets
- A range of strategies and resources to help embed effective assessment practices

This course is suitable for:

- Senior Leadership Team (SLT)
- EAL co-ordinators
- Staff with responsibility for EAL



Course details

Date: Tuesday 28 August 2018
Time: 10am-4pm
Venue: The Bell Foundation,
Red Cross Lane,
Cambridge, CB2 0QU
Cost: £180 (includes lunch and refreshments)

About the trainer

Katherine Solomon

has wide experience of working in multilingual schools both in the UK and overseas. She has worked across primary education and academic management and has been working for The Bell Foundation as an Associate and then as Training Manager since 2014. She holds a PGCE Primary, CELTA and DELTA qualifications, along with an MA in Applied Linguistics.



“

Thank you to all of you that put so much into delivering the training days, they were so informative, I feel much more confident going into the new school year with the new Framework and left with lots of helpful information and resource ideas.

EAL co-ordinator (2017 Summer School participant)

”



To book your place on the course please visit: <http://bit.ly/EALassessment>
For more information please contact info@bell-foundation.org.uk
or speak to a member of the EAL team on 01223 275588.

The Bell Foundation's EAL Programme aspires to improve the educational outcomes of children in the UK who speak English as an Additional Language, in order to benefit the individual child and society as a whole.